

04. HEATING PLANTS

TERMOENERGO INŽENJERING

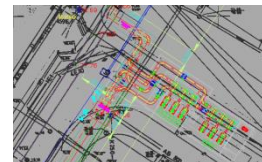
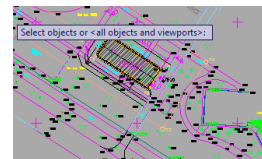
Bulevar Kralja Aleksandra 298
11 000 Belgrade
Serbia

Tel: +381 11 6557 717
+381 11 3806 173
Fax: +381 11 3806 251
E-mail: office@termoenergo.com
www.termoenergo.com



JKP "BEOGRADSKJE ELEKTRANE", BEOGRAD

- DETAILED DESIGN OF HEATING PLANT „Konjarnik“
- DETAILED DESIGN OF HEATING PLANT „Višnjička banja“
- TECHNICAL REVISION OF DCS AND BMS SYSTEMS FOR HEATING PLANTS „Konjarnik“, „Dunav“, and „Voždovac“
- BASIC DESIGN OF HEATING PLANT „ZEMUN“
- DETAILED DESIGN OF PUMPING STATIONS PPS1 AND PPS2
- DETAILED DESIGN OF PUMPING STATION IN MILESEVSKA STREET
- DETAILED DESIGN OF INSTALAIIONS FOR OIL TRANSFER ON PIERS FOR BARGES AT RIVER SAVA IN TO „NOVI BEOGRAD“
- DETAILED DESIGN OF RECONSTRUCTION FOR EXISTING TS 10/0,4 AT LOCATION TO „KANAREVO BRDO“
- DETAILED DESIGN OF RECONSTRUCTION AND MODERNIZATION SECTION FOR TECHICAL WATER AND WATER FOR FIRE PROTECTION



JKP “BEOGRADSKE ELEKTRANE”, BEOGRAD

- DETAIL DESIGN OF PUMPING STATION PPS3 – M4 AT TO MILJAKOVAC
- DETAIL DESIGN OF RECONSTRUCTION AND MODERNIZATION FOR CIRCULATION SYSTEM AT TO "MIRIJEVO" 116 MW (2 x 58 MW)
- DETAIL DESIGN OF RECONSTRUCTION FOR PUMP STATION AND EXCHANGER STATION AT TO "DUNAV" 348MW (2x58 MW AND 2 x 116MW)
- DETAIL DESIGN OF RECONSTRUCION AND REPAIR FOR FUNNELAT TO NOVI BEOGRAD



NIS SRBIJA – OIL REFINERY PANČEVO

- DETAILED DESIGN FOR EXPANSION OF POWER PLANT WITH BOILER CAPACITY 110 T/H, PRESSURE 45,6 BAR, TEMPERATURE 412 OC
- DETAILED DESIGN OF BOILER INSTALATION BF-9602 CAPACITY 120 T/H PRESSURE OF STEAM 45,6 BAR I TEMPERATURE 412OC
- DETAILED DESIGN OF INSTRUMENTATION FOR BOILER BF 9602 - DOCUMENTATION DONE FOR FOXBORO



ICN GALENIKA D.D. – ZEMUN

- DETAIL DESIGN OF BOILER S – 2500 (MANUFACTURER NO. 237) INSTALLATION IN FIRST PHASE OF HEATING PLANT
- DETAIL DESIGN OF BOILER NO. 2 S – 2500 OPTIMAL (MANUFACTURER NO. 214) INSTALLATION IN SECOND PHASE OF HEATING PLANT



JAPAN TOBACCO INTERNATIONAL “SENTA”

- DETAILED DESIGN OF HEATING PLANT IN OBJECT 7B, CAPACITY 6,5 T/H, 12 BAR



DIN “FABRIKA DUVANA” A.D. NIŠ - PHILIP MORRIS SRBIJA

- BASIC DESIGN FOR INSTALATION OF NEW STEAM BOILER CAPACITY 5 T/H, 8 BAR



CITY OF ČAČAK

- DETAILED DESIGN OF HEATING PLANT ŠUMADIJA 3 x 5 MW



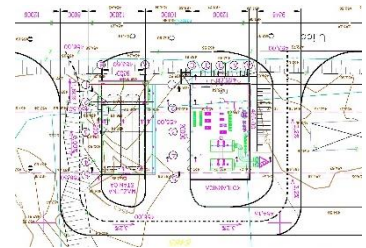
CITY OF LOZNICA (YEAR 2005.)

- DETAILED DESIGN OF HEATING PLANT LOZNICA 3 x 10 MW



JP “NOVI DOM” VRANJE –BLOCK 47

- DETAIL DESIGN OF HEATING PLANT CAPACITY 2 x 5 MW WITH OIL FUEL STORAGE



HOTEL INTERKONTINENTAL CG, D.P. BEOGRAD

- BASIC DESIGN OF HOT WATER STEAM HEATING PLANT CAPACITY 2 X 4 MW AND PRODUCTION OF STEAM 6 T/H, 12 BAR



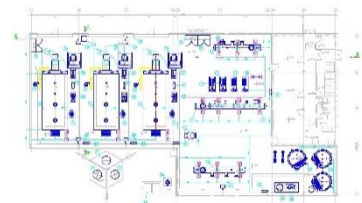
ZASTAVA AUTOMOBILI A.D. KRAGUJEVAC

- DETAILED DESIGN OF HEATING PLANT
- AS BUILT DESIGN OF HEATING PLANT CAPACITY 24 MW AND PRODUCTION OF STEAM 8 T/H, 12 BAR



TOPLIFIKACIJA MORAVIJA – ZAJEČAR A.D.

- BASIC AND DETAIL DESIGN OF HEATING PLANT CAPACITY 3 x 16 MW AND OIL FUEL STORAGE



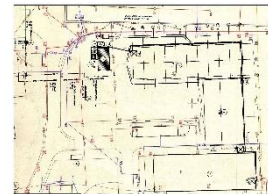
JP “SRBIJA GAS”, PODZEMNO SKLADIŠTE GASA – BANATSKI DVOR

- BASIC AND DETAIL DESIGN OF HEATING PLANT AT ENERGY SECTOR CAPACITY 2 MW



JP PTT “SRBIJA”, PRINTING OFFICE AND PAPER WAREHOUSE AT ADA HUJI

- BASIC AND DETAIL DESIGN OF HEATING PLANT AND OBJECTS SUPPLY WITH HEAT ENERGY



PKB “IMES”, PADINSKA SKELA

- DETAIL DESIGN OF HEATING PLANT, TWO BOILERS INSTALLATION OF 1,5 T/H, PRESSURE 8 BAR
- DETAIL DESIGN OF BONE BURNING PLANT WITH STEAM BOILER CAPACITY 1,5 T/H, PRESSURE 8 BAR



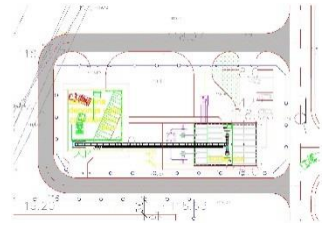
“MILAN BLAGOJEVIĆ – NAMENSKA” LUČANI

- DETAIL DESIGN OF RECONSTRUCTION FOR HEATING PLANT, STEAM BOILER TE-111, MAXIMAL PRODUCTION 16 T/H, PRESSURE 12,5 BAR



PD RB “KOLUBARA” - LAZAREVAC

- DETAIL DESIGN OF HEATING PLANT FOR OIL FUEL, CAPACITY 2 MW



CEMENTARA “TITAN” – KOSJERIĆ

- DETAIL DESIGN OF OIL FUEL CHANGE WITH WOOD FUEL
Q=1 MW



D.M.D. IBP “BEOGRAD” – ZEMUN

- DETAILED DESIGN OF THE HEATING PLANT, CAPACITY 2x10 t/h
- (WITH COMPANY “TEHNOCAD” – BELGRADE)

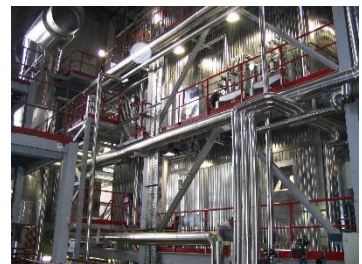
HOSPITAL “DANILO I” – CETINJE

- DETAILED DESIGN OF THE HEATING PLANT IN HOSPITAL “DANILO I” CETINJE



HOSPITAL CENTER “PODGORICA”

- TENDER DOCUMENTATION FOR EQUIPMENT DELIVERY AND WORKS IN HEATING PLANT AND CONCOMITANT INSTALATIONS



„STRAGARI“ COMPANY – STRAGARI

- STUDY OF RECONSTRUCTION FOR THE HEATING PLANT WITH CAPACITY OF 25 t/h



PD RB “Kolubara” - Lazarevac

- DETAILED DESIGN OF HEATING PLANT FOR SOLID FUEL, CAPACITY 2 MW



ICN GALENIKA d.d. – ZEMUN

- HEATING PLANT – RECONSTRUCTION OF THE EXISTING HEATING PLANT, CAUSED BY BOILER (TPK BKG – 150) DAMAGE
- DETAILED DESIGN OF HEATING PLANT RECONSTRUCTION, BOILER S-2500 INSTALATION INSTEAD OF DAMAGED BOILER
- DETAILED DESIGN OF BOILER “S – 2500“ INSTALATION (Manufact. No. 214) IN THE FIRST STEP OF HEATING PLANT RECONSTRUCTION



RAFINERIJA NAFTE BROD - «NPZ BROD» RS BIH»

- PARNA KOTLARNICA KAPACITETA PROIZVODNJE PREGREJANE PARE 3 x 25 t/h, p=14 bar

