

9. CITY DISTRICT HEATING

TERMOENERGO INŽENJERING

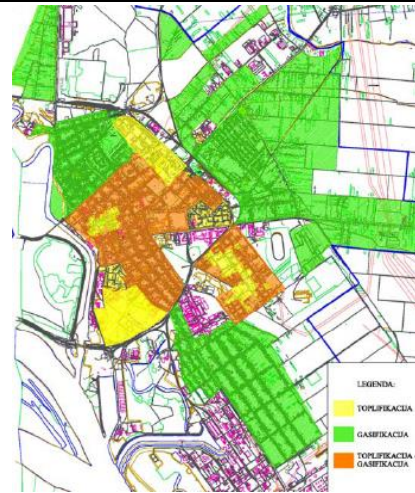
Bulevar Kralja Aleksandra 298 street
11 000 Belgrade
Serbia

Tel: +381 11 6557 717

+381 11 3806 173

Fax: +381 11 3806 251

E-mail: office@termoenergo.com



BELGRADE DISTRICT HEATING SYSTEM

- BASIC AND DETAILED DESIGN OF RECONSTRUCTION OF HEATING PLANT "KONJARNIK"
- BASIC DESIGN AND FEASIBILITY STUDY OF HEATING PLANT "VISNJICKA BANJA"
- DETAILED DESIGN OF PUMPING STATION IN MILESEVSKA NO 38 STREET
- BASIC DESIGN WITH FEASIBILITY STUDY FOR RECONSTRUCTION OF HEATING PLANT "ZEMUN"
- DETAILED AND BASIC DESIGN OF PUMPING STATION PPS1 IN BLOCK 38
- DETAILED AND BASIC DESIGN OF PUMPING STATION PPS2 IN BLOCK 28



DISTRICT HEATING OF ZAJECAR CITY

- CONCEPT DESIGN OF THE WHOLE ZAJECAR
- GENERAL DESIGN OF THE WHOLE ZAJECAR
- DETAILED DESIGN OF THE WHOLE ZAJECAR
- HEATING PLANT 3 X 16 MW (ENGINEERING)
- HEATING PLANT 3 X 10 MW
- STRATEGIC DEVELOPMENT PLAN

VRANJE - DISTRICT HEATING IN BLOCK 47

- BOILERHOUSE WITH STACK AND HEAVY FUEL OIL TANK FARM
- DISTRIBUTION NETWORK FOR BLOCK 47



LOZNICA – DISTRICT HEATING FROM VISCOSE PLANT

- TECHNICAL STUDY ON TUNING OF DISTRICT HEATING NETWORK AND SUBSTATIONS
- TECHNICAL REVISION OF DESIGNS FOR RECONSTRUCTION AND MODERNIZATION OF BOILERS NO.1,2,3 IN POWERPLANT "VISKOZA"
- DETAILED DESIGNS FOR ERRECTION AND CONNECTION OF BOILER NO.1



DISTRICT HEATING OF SREMSKA MITROVICA CITY

- DETAILED DESIGN OF DISTRICT HEATING SYSTEM, MAIN HOTWATER PIPELINE AND BRANCH SECTIONS
- TECHNICAL INVESTMENT DOCUMENTATION FOR MAIN HOTWATER PIPELINE AND BLOCK NETWORK
- DETAILED DESIGN PROJECT FOR RECONSTRUCTION OF PUMPING/HEAT EXCHANGE STATION



OBRENOVAC-ZABREŽJE DISTRICT HEATING

- BASIC DESIGNS FOR OBRENOVAC-ZABREŽJE HEATING
- DETAILED DESIGNS FOR OBRENOVAC-ZABREŽJE HEATING



PLJEVLJA DISTRICT HEATING FROM POWERPLANT PLJEVLJA

- BASIC CONCEPT SOLUTION FOR PLJEVLJA HEATING
- DETAILED DESIGNS FOR PLJEVLJA DISTRICT HEATING
- DETAILED DESIGNS FOR DISTRIBUTION NETWORK
- DETAILED MECHANICAL DESIGN OF PUMP STATION (REV.A)
- DETAILED DESIGN FOR MEASURING AND CONTROL OF PUMP AND EXCHANGER STATION

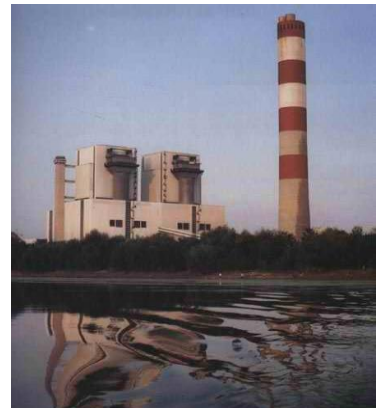
ŽUPSKI ALEKSANDROVAC – DISTRICT HEATING

- BASIC DESIGN EXPANSION OF EXISTING BOILERHOUSE "VINO ŽUPA" WITH 2 STEAM BOILERS (41 t/h) AND PUMP/EXCHANGER STATION 34,7 MW
- PRIMARY HOTWATER NETWORK DESIGNS
- INVESTMENT PROGRAM



BEOGRAD DISTRICT HEATING FROM POWERPLANT “Nikola Tesla”

- BASIC TECHNOLOGICAL DESIGN FOR COUPLING OF HEATING SYSTEMS OBRENOVAC AND BEOGRAD (CONNECTION OF POWERPLANT UNITS I AND II WITH UNITS III,IV,V,VI)



SMEDEREVO DISTRICT HEATING

- MAINS AND DISTRIBUTION NETWORK FROM PUMP STATION TO SUBSTATIONS APPR. 32 KM AWAY
- CENTRAL PUMPING STATION
- TECHNICAL INVESTMENT PROGRAM FOR SMEDEREVO DISTRICT HEATING
- TECHNICAL DOCUMENTATION - PRELIMINARY INVESTMENT PROGRAM FOR SMEDEREVO DISTRICT HEATING FROM METALWORKS SMEDEREVO
- FEASIBILITY STUDY FOR SMEDEREVO DISTRICT HEATING WITH WASTE HEAT FROM STEELWORKS "SARTID 1913"
- MAIN DESIGN FOR SMEDEREVO DISTRICT HEATING [212 MW] USING WASTE WATER FROM:
 - STEEL MILL
 - AGGLOMERATION
 - HOT ROLLING MILL
- RECONSTRUCTION OF PUMPING HEAT EXCHANGER STATION FOR HEATING PLANT SARTID – 1913 WITH POWER OF 100 MW AND CHECKING THE DISTRIBUTION NETWORK

